

## 测试报告

No. CANEC1500341302

日期: 2015年01月16日 第1页,共27页

深圳市固得沃克电子有限公司

深圳市福田区深南中路世纪汇都会轩2102室

以下测试之样品是由申请者所提供及确认: 整流二极管

SGS工作编号: CP15-000145 - SZ

型号: DO-41

客户参考信息: 请见REMARK 1

料号: 请见REMARK 2

样品接收日期: 2015年01月08日

测试周期: 2015年01月08日 - 2015年01月16日

测试要求: 根据客户要求测试

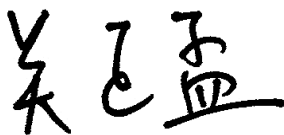
测试方法: 请参见下一页

测试结果: 请参见下一页

结论: 基于所送样品进行的测试, 镉、铅、汞、六价铬、多溴联苯(PBBs)、多溴二苯醚(PBDEs)的测试结果符合欧盟RoHS指令2002/95/EC的重订指令2011/65/EU附录II的限值要求。

通标标准技术服务有限公司

授权签名



Zm guan 关正孟

批准签署人

备注: 本报告是编号为CANEC1500341301报告的中文版本



This document is issued by the Company subject to its General Conditions of Service printed overleaf, available on request or accessible at <http://www.sgs.com/en/Terms-and-Conditions.aspx> and, for electronic format documents, subject to Terms and Conditions for Electronic Documents at <http://www.sgs.com/en/Terms-and-Conditions/Terms-e-Documents.aspx>. Attention is drawn to the limitation of liability, indemnification and jurisdiction issues defined therein. Any holder of this document is advised that information contained hereon reflects the Company's findings at the time of its intervention only and within the limits of Client's instructions, if any. The Company's sole responsibility is to its Client and this document does not exonerate parties to a transaction from exercising all their rights and obligations under the transaction documents. This document cannot be reproduced except in full, without prior written approval of the Company. Any unauthorized alteration, forgery or falsification of the content or appearance of this document is unlawful and offenders may be prosecuted to the fullest extent of the law. Unless otherwise stated the results shown in this test report refer only to the sample(s) tested.

Attention: To check the authenticity of testing / inspection report & certificate, please contact us at telephone: (86-755) 8307 1443, or email: CN.Doccheck@sgs.com

SGS-CTI Standards Technical Services Co., Ltd.  
Guangzhou Branch / 通标标准技术服务有限公司  
Guangzhou Branch / 通标标准技术服务有限公司

198 Kezhu Road, Science Park Guangzhou Economic & Technology Development District, Guangzhou, China 510663 t (86-20) 82155555 f (86-20) 82075113 www.sgsgroup.com.cn  
中国·广州·经济技术开发区科学城科珠路198号 邮编: 510663 t (86-20) 82155555 f (86-20) 82075113 e sgs.china@sgs.com

## 测试报告

No. CANEC1500341302

日期: 2015年01月16日 第2页,共27页

测试结果:

### 测试样品描述:

样品编号	SGS样品ID	描述
SN1	CAN15-003413.001	带灰色印字的黑色本体
SN2	CAN15-003413.002	银色金属引脚

备注:

- (1) 1 mg/kg = 1 ppm = 0.0001%
- (2) MDL = 方法检测限
- (3) ND = 未检出 (< MDL)
- (4) "-" = 未规定

### RoHS指令2011/65/EU

- 测试方法:
- (1)参考IEC 62321-5:2013, 用ICP-OES测定镉的含量
  - (2)参考IEC 62321-5:2013, 用ICP-OES测定铅的含量
  - (3)参考IEC 62321-4:2013, 用ICP-OES测定汞的含量
  - (4)参考IEC 62321:2008, 用紫外-可见分光光度计比色法测定六价铬的含量
  - (5)参考IEC 62321:2008, 用GC-MS测定PBBs(多溴联苯)和PBDEs(多溴二苯醚) 的含量

测试项目	限值	单位	MDL	001
镉 (Cd)	100	mg/kg	2	ND
铅 (Pb)	1,000	mg/kg	2	14105▲
汞 (Hg)	1,000	mg/kg	2	ND
六价铬(Cr(VI))	1,000	mg/kg	2	ND
多溴联苯之和(PBBs)	1,000	mg/kg	-	ND
一溴联苯	-	mg/kg	5	ND
二溴联苯	-	mg/kg	5	ND
三溴联苯	-	mg/kg	5	ND
四溴联苯	-	mg/kg	5	ND
五溴联苯	-	mg/kg	5	ND
六溴联苯	-	mg/kg	5	ND
七溴联苯	-	mg/kg	5	ND
八溴联苯	-	mg/kg	5	ND
九溴联苯	-	mg/kg	5	ND
十溴联苯	-	mg/kg	5	ND
多溴二苯醚之和(PBDEs)	1,000	mg/kg	-	ND
一溴二苯醚	-	mg/kg	5	ND



This document is issued by the Company subject to its General Conditions of Service printed overleaf, available on request or accessible at <http://www.sgs.com/en/Terms-and-Conditions.aspx> and, for electronic format documents, subject to Terms and Conditions for Electronic Documents at <http://www.sgs.com/en/Terms-and-Conditions/Terms-e-Documents.aspx>. Attention is drawn to the limitation of liability, indemnification and jurisdiction issues defined therein. Any holder of this document is advised that information contained hereon reflects the Company's findings at the time of its intervention only and within the limits of Client's instructions, if any. The Company's sole responsibility is to its Client and this document does not exonerate parties to a transaction from exercising all their rights and obligations under the transaction documents. This document cannot be reproduced except in full, without prior written approval of the Company. Any unauthorized alteration, forgery or falsification of the content or appearance of this document is unlawful and offenders may be prosecuted to the fullest extent of the law. Unless otherwise stated the results shown in this test report refer only to the sample(s) tested.

Attention: To check the authenticity of testing /inspection report & certificate, please contact us at telephone: (86-755) 8307 1443, or email: CN.Doccheck@sgs.com

198 Kezhu Road, Sciencetech Park Guangzhou Economic & Technology Development District, Guangzhou, China 510663 t (86-20) 82155555 f (86-20) 82075113 www.sgs.com.cn  
中国·广州·经济技术开发区科学城科珠路198号 邮编: 510663 t (86-20) 82155555 f (86-20) 82075113 e sgs.china@sgs.com

## 测试报告

No. CANEC1500341302

日期: 2015年01月16日 第3页,共27页

测试项目	限值	单位	MDL	001
二溴二苯醚	-	mg/kg	5	ND
三溴二苯醚	-	mg/kg	5	ND
四溴二苯醚	-	mg/kg	5	ND
五溴二苯醚	-	mg/kg	5	ND
六溴二苯醚	-	mg/kg	5	ND
七溴二苯醚	-	mg/kg	5	ND
八溴二苯醚	-	mg/kg	5	ND
九溴二苯醚	-	mg/kg	5	ND
十溴二苯醚	-	mg/kg	5	ND

备注:

(1) 最大允许极限值引用自指令2011/65/EU 附录II.

### RoHS指令2011/65/EU

- 测试方法:
- (1)参考IEC 62321-5:2013, 用ICP-OES测定镉的含量
  - (2)参考IEC 62321-5:2013, 用ICP-OES测定铅的含量
  - (3)参考IEC 62321-4:2013, 用ICP-OES测定汞的含量
  - (4)参考IEC 62321:2008, 用点测试法/紫外-可见分光光度计比色法测定六价铬的含量
  - (5)参考IEC 62321:2008, 用GC-MS测定PBBs(多溴联苯)和PBDEs(多溴二苯醚) 的含量

测试项目	限值	单位	MDL	002
镉 (Cd)	100	mg/kg	2	ND
铅 (Pb)	1,000	mg/kg	2	ND
汞 (Hg)	1,000	mg/kg	2	ND
六价铬(Cr(VI))	-	-	◇	阴性
多溴联苯之和(PBBs)	1,000	mg/kg	-	ND
一溴联苯	-	mg/kg	5	ND
二溴联苯	-	mg/kg	5	ND
三溴联苯	-	mg/kg	5	ND
四溴联苯	-	mg/kg	5	ND
五溴联苯	-	mg/kg	5	ND
六溴联苯	-	mg/kg	5	ND
七溴联苯	-	mg/kg	5	ND
八溴联苯	-	mg/kg	5	ND
九溴联苯	-	mg/kg	5	ND
十溴联苯	-	mg/kg	5	ND
多溴二苯醚之和(PBDEs)	1,000	mg/kg	-	ND
一溴二苯醚	-	mg/kg	5	ND



This document is issued by the Company subject to its General Conditions of Service printed overleaf, available on request or accessible at <http://www.sgs.com/en/Terms-and-Conditions.aspx> and, for electronic format documents, subject to Terms and Conditions for Electronic Documents at <http://www.sgs.com/en/Terms-and-Conditions/Terms-e-Documents.aspx>. Attention is drawn to the limitation of liability, indemnification and jurisdiction issues defined therein. Any holder of this document is advised that information contained hereon reflects the Company's findings at the time of its intervention only and within the limits of Client's instructions, if any. The Company's sole responsibility is to its Client and this document does not exonerate parties to a transaction from exercising all their rights and obligations under the transaction documents. This document cannot be reproduced except in full, without prior written approval of the Company. Any unauthorized alteration, forgery or falsification of the content or appearance of this document is unlawful and offenders may be prosecuted to the fullest extent of the law. Unless otherwise stated the results shown in this test report refer only to the sample(s) tested.

Attention: To check the authenticity of testing /inspection report & certificate, please contact us at telephone: (86-755) 8307 1443, or email: CN.Doccheck@sgs.com

198 Kezhu Road, Sciencetech Park Guangzhou Economic & Technology Development District, Guangzhou, China 510663 t (86-20) 82155555 f (86-20) 82075113 www.sgs.com.cn  
中国·广州·经济技术开发区科学城科珠路198号 邮编: 510663 t (86-20) 82155555 f (86-20) 82075113 e sgs.china@sgs.com

## 测试报告

No. CANEC1500341302

日期: 2015年01月16日 第4页,共27页

测试项目	限值	单位	MDL	002
二溴二苯醚	-	mg/kg	5	ND
三溴二苯醚	-	mg/kg	5	ND
四溴二苯醚	-	mg/kg	5	ND
五溴二苯醚	-	mg/kg	5	ND
六溴二苯醚	-	mg/kg	5	ND
七溴二苯醚	-	mg/kg	5	ND
八溴二苯醚	-	mg/kg	5	ND
九溴二苯醚	-	mg/kg	5	ND
十溴二苯醚	-	mg/kg	5	ND

备注:

(1) 最大允许极限值引用自指令2011/65/EU 附录II.

(2) ◇点测试法:

阴性= 未检测到六价铬, 阳性= 检测到六价铬;

(当点测试结果为阴性或无法确定时,将采用沸水萃取法作进一步的结果验证.)

◇沸水萃取法:

阴性= 未检测到六价铬

阳性= 检测到六价铬; 表明50 cm<sup>2</sup>表面积的被测试样品的沸水萃取液中六价铬的浓度等于或大于0.02 mg/kg

由于未获知样品的存储条件和生产日期, 样品的六价铬测试结果仅能代表测试时样品含六价铬的状态。

### 六溴环十二烷(HBCDD)

测试方法: 参考IEC 62321:2008, 用GC-MS分析。

测试项目	单位	MDL	001	002
六溴环十二烷(HBCDD)	mg/kg	10	ND	ND

备注:

(1) 参考信息: RoHS指令2002/95/EC的重订指令2011/65/EU:

六溴环十二烷(HBCDD) 被列为需优先进行风险评估和考虑进行限制的物质。

### 邻苯二甲酸盐(或酯)

测试方法: 参考EN 14372: 2004的方法测定, 采用GC-MS进行分析。



This document is issued by the Company subject to its General Conditions of Service printed overleaf, available on request or accessible at <http://www.sgs.com/en/Terms-and-Conditions.aspx> and, for electronic format documents, subject to Terms and Conditions for Electronic Documents at <http://www.sgs.com/en/Terms-and-Conditions/Terms-e-Document.aspx>. Attention is drawn to the limitation of liability, indemnification and jurisdiction issues defined therein. Any holder of this document is advised that information contained hereon reflects the Company's findings at the time of its intervention only and within the limits of Client's instructions, if any. The Company's sole responsibility is to its Client and this document does not exonerate parties to a transaction from exercising all their rights and obligations under the transaction documents. This document cannot be reproduced except in full, without prior written approval of the Company. Any unauthorized alteration, forgery or falsification of the content or appearance of this document is unlawful and offenders may be prosecuted to the fullest extent of the law. Unless otherwise stated the results shown in this test report refer only to the sample(s) tested.

Attention: To check the authenticity of testing /inspection report & certificate, please contact us at telephone: (86-755) 8307 1443, or email: [CN.Doccheck@sgs.com](mailto:CN.Doccheck@sgs.com)

198 Kezhu Road, Sciencetech Park Guangzhou Economic & Technology Development District, Guangzhou, China 510663 t (86-20) 82155555 f (86-20) 82075113 www.sgs.com.cn

中国·广州·经济技术开发区科学城科珠路198号 邮编: 510663 t (86-20) 82155555 f (86-20) 82075113 e [sgs.china@sgs.com](mailto:sgs.china@sgs.com)

## 测试报告

No. CANEC1500341302

日期: 2015年01月16日 第5页,共27页

测试项目	CAS NO.	单位	MDL	001	002
邻苯二甲酸二丁酯 (DBP)	84-74-2	%(w/w)	0.003	ND	ND
邻苯二甲酸丁苄酯 (BBP)	85-68-7	%(w/w)	0.003	ND	ND
邻苯二甲酸二(2-乙基己基)酯 (DEHP)	117-81-7	%(w/w)	0.003	ND	ND

### 备注:

(1) 参考信息: RoHS指令2002/95/EC的重订指令2011/65/EU:

邻苯二甲酸二(2-乙基己基)酯(DEHP), 邻苯二甲酸丁酯苄酯(BBP)和邻苯二甲酸二丁酯(DBP) 被列为需优先进行风险评估和考虑进行限制的物质。

备注▲: 根据客户提供的声明, 样品001中的铅(Pb)被欧盟RoHS指令2011/65/EU豁免, 相应豁免条文(请以英文原文为准) [ANNEX III 7(a)]: 高熔点型焊料中的铅(即铅含量等于或大于85%的铅基合金焊料)。



This document is issued by the Company subject to its General Conditions of Service printed overleaf, available on request or accessible at <http://www.sgs.com/en/Terms-and-Conditions.aspx> and, for electronic format documents, subject to Terms and Conditions for Electronic Documents at <http://www.sgs.com/en/Terms-and-Conditions/Terms-e-Documents.aspx>. Attention is drawn to the limitation of liability, indemnification and jurisdiction issues defined therein. Any holder of this document is advised that information contained hereon reflects the Company's findings at the time of its intervention only and within the limits of Client's instructions, if any. The Company's sole responsibility is to its Client and this document does not exonerate parties to a transaction from exercising all their rights and obligations under the transaction documents. This document cannot be reproduced except in full, without prior written approval of the Company. Any unauthorized alteration, forgery or falsification of the content or appearance of this document is unlawful and offenders may be prosecuted to the fullest extent of the law. Unless otherwise stated the results shown in this test report refer only to the sample(s) tested.

Attention: To check the authenticity of testing / inspection report & certificate, please contact us at telephone: (86-755) 8307 1443, or email: [CN.Doccheck@sgs.com](mailto:CN.Doccheck@sgs.com)

198 Kezhu Road, Sciencetech Park Guangzhou Economic & Technology Development District, Guangzhou, China 510663 t (86-20) 82155555 f (86-20) 82075113 www.sgsgroup.com.cn

中国·广州·经济技术开发区科学城科珠路198号 邮编: 510663 t (86-20) 82155555 f (86-20) 82075113 e [sgs.china@sgs.com](mailto:sgs.china@sgs.com)

### REMARK 1

R-1,R-3,R-6 , A-405 , DO-41 , DO-15,DO-27 , 17-02 , SMAF,SMBF,DB-1,DB-S,  
RS-1 , RB-15 , WOM,WOL,RS-2 , RS-2M,BR-3 , RS-4L,RS-4M,BR-6 , RL-6L,  
RS-6M,BR-8 , RS-8L,RS-8M,DO-213AA,DO-213AB,DO-214AA,DO-214AB,  
DO-214AC,SM-1 , MDS,MB-M,KBL,KBJ,GBJ,MB15/W,MB25/W,MB35/W,BR-10 ,  
SOD-123,SOD-123FL , SOD323 , SOD523 , SOT23 , TO-220F , TO-220,  
ITO-220 ITO-220F , DO-201 , KBPC,KBU,GBU,KBP,TO-263 , TO-3P,DO-35 ,  
LL-34 , LL-41 , AR,DO-201AE , TO-247 , SS,GBL,BR-10 , MP/W,DF,DFS,ABS,  
WOM-S,ADS,MBF,LBS,ABF



This document is issued by the Company subject to its General Conditions of Service printed overleaf, available on request or accessible at <http://www.sgs.com/en/Terms-and-Conditions.aspx> and, for electronic format documents, subject to Terms and Conditions for Electronic Documents at <http://www.sgs.com/en/Terms-and-Conditions/Terms-e-Documents.aspx>. Attention is drawn to the limitation of liability, indemnification and jurisdiction issues defined therein. Any holder of this document is advised that information contained hereon reflects the Company's findings at the time of its intervention only and within the limits of Client's instructions, if any. The Company's sole responsibility is to its Client and this document does not exonerate parties to a transaction from exercising all their rights and obligations under the transaction documents. This document cannot be reproduced except in full, without prior written approval of the Company. Any unauthorized alteration, forgery or falsification of the content or appearance of this document is unlawful and offenders may be prosecuted to the fullest extent of the law. Unless otherwise stated the results shown in this test report refer only to the sample(s) tested.

Attention: To check the authenticity of testing /inspection report & certificate, please contact us at telephone: (86-755) 8307 1443, or email: [CN.Doccheck@sgs.com](mailto:CN.Doccheck@sgs.com)

REMARK2

ATTACHMENT	
PACKAGE	PART NUMBER
R-1	1S20 1S30 1S40 1S50 1S60 1S80 1S90 1S100 1S150 1S200 1U1 1U2 1U3 1U4 1U5 1U6 1U7 1U8 1H1 1H2 1H3 1H4 1H5 1H6 1H7 1H8 1F1 1F2 1F3 1F4 1F5 1F6 1F7 1A1 1A2 1A3 1A4 1A5 1A6 1A7 1U1 G 1U2G 1U3G 1U4G 1U5G 1U6G 1U7G 1U8G 1H1G 1H2G 1H3G 1H4G 1H5G 1H6G 1H7G 1H8G 1F1G 1F2G 1F3G 1F4G 1F5G 1F6G 1F7G 1A1G 1A2G 1A3G 1A4G 1A5G 1A6G 1A7G RB100A
DO-41	SR190 SR1100 SR1150 SR220 SR230 SR240 SR250 SR260 SR280 SR290 SR2100 SR2150 SR2200 SF11 SF12 SF13 SF14 SF15 SF16 SF17 SF18 HER101 HER102 HER103 HER104 HER105 HER106 HER107 HER108 FR101 FR102 FR103 FR104 FR105 FR106 FR107 1N4933 1N4934 1N4935 1N4936 1N4937 1N4942 1N4944 1N4946 1 N4947 1N4948 1N4728~1N47641N4001 1N4002 1N4003 1N4004 1N4005 1 N4006 1N4007 SF11G SF12G SF13G SF14G SF15G SF16G SF17G SF18G HER101G HER102G HER103G HER104G HER105G HER106G HER107G HER108G FR101G FR102G FR103G FR104G FR105G FR106G FR107G 1N4933G 1 N4934G 1N4935G 1 N4936G 1N4937G 1N4942G 1 N4944G 1N4946G 1 N4947G 1N4948G 1N4001G 1N4002G 1N4003G 1 N4004G 1N4005G 1N4006G 1N4007G R1200 R1500 R1600 R1800 R2000 R1200F R1500F R1600F R1800F R2000F



This document is issued by the Company subject to its General Conditions of Service printed overleaf, available on request or accessible at <http://www.sgs.com/en/Terms-and-Conditions.aspx> and, for electronic format documents, subject to Terms and Conditions for Electronic Documents at <http://www.sgs.com/en/Terms-and-Conditions/Terms-e-Documents.aspx>. Attention is drawn to the limitation of liability, indemnification and jurisdiction issues defined therein. Any holder of this document is advised that information contained hereon reflects the Company's findings at the time of its intervention only and within the limits of Client's instructions, if any. The Company's sole responsibility is to its Client and this document does not exonerate parties to a transaction from exercising all their rights and obligations under the transaction documents. This document cannot be reproduced except in full, without prior written approval of the Company. Any unauthorized alteration, forgery or falsification of the content or appearance of this document is unlawful and offenders may be prosecuted to the fullest extent of the law. Unless otherwise stated the results shown in this test report refer only to the sample(s) tested.

Attention: To check the authenticity of testing /inspection report & certificate, please contact us at telephone: (86-755) 8307 1443, or email: CN.Doccheck@sgs.com

198 Kezhu Road, Sciotech Park Guangzhou Economic & Technology Development District, Guangzhou, China 510663 t (86-20) 82155555 f (86-20) 82075113 www.sgsgroup.com.cn  
 中国·广州·经济技术开发区科学城科珠路198号 邮编: 510663 t (86-20) 82155555 f (86-20) 82075113 e sgs.china@sgs.com

A-405	<p>SR120S SR130S SR140S SR150S SR160S SR180S SR190S SR1100S  SR1150S SR1200S  SF11S SF12S SF13S SF14S SF15S SF16S SF17S SF18S  HER101S HER102S HER103S HER104S HER105S HER106S  HER107S HER108S  RL101F RL102F RL103F RL104F RL105F RL106F RL107F  1N4001S 1N4002S 1N4003S 1N4004S 1N4005S 1N4006S 1N4007S  SF11SG SF12SG SF13SG SF14SG SF15SG SF16SG SF17SG  SF18SG  HER101SG HER102SG HER103SG HER104SG HER105SG  HER106SG HER107SG HER108SG  FR101FG FR102FG FR103FG FR104FG FR105FG FR106FG</p>
DO-15	<p>SR220 SR230 SR240 SR250 SR260 SR280 SR290 SR2100 SR2150  SR2200 SF21 SF22 SF23 SF24 SF25 SF26 SF27 SF28 HER151  HER152 HER153 HER154 HER155 HER156 HER157 HER158  HER201 HER202 HER203 HER204 HER205 HER206 HER207  HER208 FR151 FR152 FR153 FR154 FR155 FR156 FR157  FR201 FR202 FR203 FR204 FR205 FR206 FR207 1N5391 1N5392  1N5393 1N5395 1N5397 1N5398 1N5399 RL151 RL152 RL153 RL154  RL155 RL156 RL157 RL201 RL202 RL203 RL204 RL205 RL206 RL207  R2500 R3000 R3500 R4000 R2500F R3000F R3500F R4000F  SF21 G SF22G SF23G SF24G SF25G SF26G SF27G SF28G  HER151G HER152G HER153G HER154G HER155G HER156G  HER157G HER158G HER201G HER202G HER203G HER204G  HER205G HER206G HER207G HER208G FR151G FR152G FR153G  FR154G FR155G FR156G FR157G FR201 G FR202G FR203G  FR204G FR205G FR206G FR207G 1N5391G 1N5392G 1N5393G  1N5395G 1N5397G 1N5398G 1N5399G RL151G RL152G RL153G  RL154G RL155G RL156G RL157G RL201G RL202G RL203G RL204G  RL205G RL206G RL207G</p>



This document is issued by the Company subject to its General Conditions of Service printed overleaf, available on request or accessible at <http://www.sgs.com/en/Terms-and-Conditions.aspx> and, for electronic format documents, subject to Terms and Conditions for Electronic Documents at <http://www.sgs.com/en/Terms-and-Conditions/Terms-e-Documents.aspx>. Attention is drawn to the limitation of liability, indemnification and jurisdiction issues defined therein. Any holder of this document is advised that information contained hereon reflects the Company's findings at the time of its intervention only and within the limits of Client's instructions, if any. The Company's sole responsibility is to its Client and this document does not exonerate parties to a transaction from exercising all their rights and obligations under the transaction documents. This document cannot be reproduced except in full, without prior written approval of the Company. Any unauthorized alteration, forgery or falsification of the content or appearance of this document is unlawful and offenders may be prosecuted to the fullest extent of the law. Unless otherwise stated the results shown in this test report refer only to the sample(s) tested.

Attention: To check the authenticity of testing /inspection report & certificate, please contact us at telephone: (86-755) 8307 1443, or email: CN.Doccheck@sgs.com

198 Kezhu Road, Sciotech Park Guangzhou Economic & Technology Development District, Guangzhou, China 510663 t (86-20) 82155555 f (86-20) 82075113 www.sgs.com.cn  
中国·广州·经济技术开发区科学城科珠路198号 邮编: 510663 t (86-20) 82155555 f (86-20) 82075113 e sgs.china@sgs.com



DO-27	<p>1N5820 1N5821 1N5822 1N5823 1N5824 1N5825                  SR320 SR330 SR340 SR350 SR360 SR380 SR390 SR3100 SR3150                  SR3200 SR520 SR530 SR540 SR550 SR560 SR580 SR590 SR5100                  SR5150 SR5200 SF31 SF32 SF33 SF34 SF35 SF36 SF37 SF38                  SF51 SF52 SF53 SF54 SF55 SF56 SF57 SF58                  SF61 SF62 SF63 SF64 SF65 SF66 SF67 SF68                  HER301 HER302 HER303 HER304 HERSO5 HER306 HER307                  HER308 HER501 HER502 HER503 HER504 HER505 HER506 HER507                  HER508 FR301 FR302 FR303 FR304 FR305 FR306 FR307 FR309                  1N5400 1N5401 1N5402 1N5404 1N5406 1N5407 1N5408                  SF31G SF32G SF33G SF34G SF35G SF36G SF37G SF38G                  HER301G HER302G HER303G HER304G HER305G HER306G                  HER307G HER308G HER501G HER502G HER503G HER504G                  HER505G HER506G HER507G HER508G FR301G FR302G FR303G                  FR304G FR305G FR306G FR307G 1N5400G 1N5401G 1N5402G                  1N5404G 1N5406G 1N5407G 1N5408G</p>
R-3	<p>RL251 RL252 RL253 RL254 RL255 RL256 RL257                  FR251 FR252 FR253 FR254 FR255 FR256 FR257</p>
R-6	<p>HER601 HER602 HER603 HER604 HER605 HER606 HER607                  FR601 FR602 FR603 FR604 FR605 FR606 FR607 6A05 6A1 6A2 6A4                  6A6 6A8 6A10 8A05 8A1 8A2 8A4 8A6 8A8 8A10 10A05 10A1 10A2                  10A4 10A6 10A8 10A10 6A05G 6A1G 6A2G 6A4G 6A6G 6A8G 6A10G</p>
TVS PRO	<p>P4KE6.8~ P4KE440A SA5.0 ~ SA180A P6KE6.8~ P6KE440A                  1.5KE6.8~1.5KE440A SMAJ5.0~SMAJ200CA SMBJ5.0~ SMBJ200CA                  SMCJ5.0~ SMCJ200CA 3KP 5KP 10KP</p>



This document is issued by the Company subject to its General Conditions of Service printed overleaf, available on request or accessible at <http://www.sgs.com/en/Terms-and-Conditions.aspx> and, for electronic format documents, subject to Terms and Conditions for Electronic Documents at <http://www.sgs.com/en/Terms-and-Conditions/Terms-e-Documents.aspx>. Attention is drawn to the limitation of liability, indemnification and jurisdiction issues defined therein. Any holder of this document is advised that information contained hereon reflects the Company's findings at the time of its intervention only and within the limits of Client's instructions, if any. The Company's sole responsibility is to its Client and this document does not exonerate parties to a transaction from exercising all their rights and obligations under the transaction documents. This document cannot be reproduced except in full, without prior written approval of the Company. Any unauthorized alteration, forgery or falsification of the content or appearance of this document is unlawful and offenders may be prosecuted to the fullest extent of the law. Unless otherwise stated the results shown in this test report refer only to the sample(s) tested.

Attention: To check the authenticity of testing /inspection report & certificate, please contact us at telephone: (86-755) 8307 1443, or email: CN.Doccheck@sgs.com

198 Kezhu Road, Sciencetech Park Guangzhou Economic & Technology Development District, Guangzhou, China 510663 t (86-20) 82155555 f (86-20) 82075113 www.sgs.com.cn  
 中国·广州·经济技术开发区科学城科珠路198号 邮编: 510663 t (86-20) 82155555 f (86-20) 82075113 e sgs.china@sgs.com

TO-220A	<p>SR820 SR830 SR840 SR845 SR850 SR8 60 SR880 SR8100 SR8150  SR8200 SR1020 SR1030 SR1040 SR1045 SR1050 SR1060 SR1080  SR10100 SR10150 SR10200 SF81 SF82 SF83 SF84 SF85 SF86 SF87  SF88 HER801 HER802 HER803 HER804 H5805 HER806 HER807  FR801 FR802 FR803 FR804 FR805 FR806 FR807MBR1020 MBR1030  MBR1040 MBR1045 MBR1050 MBR1060 MBR1080 MBR10100  MBR10150 MBR10200 MBR1620 MBR1630 MBR1640 MBR1645  MBR1650 MBR1660 MBR1680 MBR16100 MBR16150 MBR16200  MBR2020 MBR2030 MBR2040 MBR2045 MBR2050 MBR2060  MBR2080 MBR20100 MBR20150 MBR20200</p>
ITO-220A	<p>SRF8150 SRF8200 SRF1020 SRF1030 SRF1040 SRF1045 SRF1050  SRF1060 SRF1080 SRF10100 SRF10150 SRF1 0200  SFF81 SFF82 SFF83 SFF84 SFF85 SFF86 SFF87 SFF88  HERF801 HERF802 HERF803 HERF804 HRF805 H\$F806 HERF8 07  FRF801 FRF802 FRF803 FRF804 FRF805 FRF806 FRF807  MBRF1020 MBRF1030 MBRF1040 MBRF1045 MBRF1050 MBRF1060  MBRF1080 MBRF10100 MBRF10150 MBRF10200  MBRF1620 MBRF1630 MBRF1640 MBRF1645 MBRF1650 MBRF1660  MBRF1680 MBRF16100 MBRF16150 MBRF16200  MBRF2020 MBRF2030 MBRF2040 MBRF2045 MBRF2050 MBRF2060  MBRF2080 MBRF20100 MBRF20150 MBRF20200</p>



This document is issued by the Company subject to its General Conditions of Service printed overleaf, available on request or accessible at <http://www.sgs.com/en/Terms-and-Conditions.aspx> and, for electronic format documents, subject to Terms and Conditions for Electronic Documents at <http://www.sgs.com/en/Terms-and-Conditions/Terms-e-Documents.aspx>. Attention is drawn to the limitation of liability, indemnification and jurisdiction issues defined therein. Any holder of this document is advised that information contained hereon reflects the Company's findings at the time of its intervention only and within the limits of Client's instructions, if any. The Company's sole responsibility is to its Client and this document does not exonerate parties to a transaction from exercising all their rights and obligations under the transaction documents. This document cannot be reproduced except in full, without prior written approval of the Company. Any unauthorized alteration, forgery or falsification of the content or appearance of this document is unlawful and offenders may be prosecuted to the fullest extent of the law. Unless otherwise stated the results shown in this test report refer only to the sample(s) tested.

Attention: To check the authenticity of testing /inspection report & certificate, please contact us at telephone: (86-755) 8307 1443, or email: CN.Doccheck@sgs.com

TO-220	<p>SR1020CT SR1030CT SR1040CT SR1045CT SR1050CT SR1060CT  SR1080CT SR10100CT SR10150CT SR10200CT SR1620CT  SR1630CT SR1640CT SR1645C SR1650CT SR1660CT SR1680CT  SR16100CT SR16150CT SR16200CT SR2020CT SR2030CT  SR2040CT SR2045C SR2050CT SR2060T SR2080CT SR20100CT  SR20150CT SR20200CT SR2520CT SR2530CT SR2540CT SR2545C  SR2550CT SR2560CT SR2580CT  SR25100CTSR25150CTSR25200CT SR3020CT SR3030CT SR3040CT  SR3045C SR3050CT SR3060CT SR3080CT SR30100CT SR30150CT  SR30200CTSF101CT SF102CT SF103CT SF104CT SF105CT  SF106CT SF107CT SF108CTSF121CT SF122CT SF123CT SF124CT  SF125CT SF126CT SF127CT SF128CT SF161CT SF162CT SF163CT  SF164CT SF165CT SF166CT SF167CT SF168CT  HE1601CTHER1602CTHER1603CTHER1604CTHER1605CT  HER1606CT HER1607CTFR1601CT F1602CT FR1603CT FR1604CT  FR1605CT FR1606CT FR1607CTMBR1020CT MBR1030CT  MBR1040CT MBR1045CT MBR1050CT MBR1060CT MBR1080CT  MBR10100CT MBR10150CT MBR10200CT MBR1620CT  MBR1630CT MBR1640CT MBR1645CT MBR1650CT MBR1660CT  MBR1680CT MBR16100CT MBR16150CT  MBR16200CTMBR2020CT MBR2030CT MBR2040CT MBR2045CT  MBR2050CT MBR2060CT MBR2080CT MBR20100CT MBR20150CT  MBR20200CT</p>
--------	---



This document is issued by the Company subject to its General Conditions of Service printed overleaf, available on request or accessible at <http://www.sgs.com/en/Terms-and-Conditions.aspx> and, for electronic format documents, subject to Terms and Conditions for Electronic Documents at <http://www.sgs.com/en/Terms-and-Conditions/Terms-e-Documents.aspx>. Attention is drawn to the limitation of liability, indemnification and jurisdiction issues defined therein. Any holder of this document is advised that information contained hereon reflects the Company's findings at the time of its intervention only and within the limits of Client's instructions, if any. The Company's sole responsibility is to its Client and this document does not exonerate parties to a transaction from exercising all their rights and obligations under the transaction documents. This document cannot be reproduced except in full, without prior written approval of the Company. Any unauthorized alteration, forgery or falsification of the content or appearance of this document is unlawful and offenders may be prosecuted to the fullest extent of the law. Unless otherwise stated the results shown in this test report refer only to the sample(s) tested.

Attention: To check the authenticity of testing /inspection report & certificate, please contact us at telephone: (86-755) 8307 1443, or email: CN.Doccheck@sgs.com

198 Kezhu Road, Sciencetech Park Guangzhou Economic & Technology Development District, Guangzhou, China 510663 t (86-20) 82155555 f (86-20) 82075113 www.sgsgroup.com.cn  
中国·广州·经济技术开发区科学城科珠路198号 邮编: 510663 t (86-20) 82155555 f (86-20) 82075113 e sgs.china@sgs.com

ITO-220	<p>SRF1020CT SRF1030CT SRF1040CT SRF1045C SRF1050CT  SRF1060CT SRF1080CT SRF1 0100CT SRF10150CT SRF10200CT  SRF1620CT SRF1630CT SRF1640CT SRF1645C SRF1650CT  SRF1660CT SRF1680CT SRF1 6100 SRF16150CT SRF16200CT  SRF2020CT SRF2030CT SRF2040CT SRF2045C SRF2050CT  SRF2060CT SRF2080CT SRF20100CT SRF20150CT SRF20200CT  SRF2520CT SRF2530CT SRF2540CT SRF2545C SRF2550CT  SRF2560CT SRF2580CT SRF251 0OCT SRF251 50CT SRF25200CT  SRF3020CT SRF3030CT SRF3040CT SRF3045C SRF3050CT  SRF3060CT SRF3080CT SRF30100 SRF30150CT SRF30200CT  SFF101CT SFF102CT SFF103CT SFF104CT SFF105CT SFF106CT  SFF107CT SFF108CT SFF121CT SFF122CT SFF123CT SFF124CT  SFF125CT SFF126CT SFF127CT SFF128CT SFF161CT SFF162CT  SFF163CT SFF164CT SFF165CT SFF166CT SFF167CT SFF1 68CT  HERF1601CT HERF1602CT HERF1603CT HERF1604CT  HERD1605CT HERF1606CT HERF1607CTFRF1601CT FRF1602CT  FRF1603CT FRF1604CT FRF1605CT FRF1606CT FRF1607CT  MBRF1020CT MBRF1030CT MBRF1040CT MBRF1045CT  MBRF1050CT MBRF1060CT MBRF1080CT MBRF10100CT  MBRF10150CT MBRF10200CT MBRF1620CT MBRF1630CT  MBRF1640CT MBRF1645CT MBRF1650CT MBRF1660CT  MBRF1680CT MBRF16100CT MBRF16150CT MBRF16200CT  MBRF2020CT MBRF2030CT MBRF2040CT MBRF2045CT  MBRF2050CT MBRF2060CT MBRF2080CT MBRF20100CT  MBRF20150CT MBRF20200CT</p>
---------	--



This document is issued by the Company subject to its General Conditions of Service printed overleaf, available on request or accessible at <http://www.sgs.com/en/Terms-and-Conditions.aspx> and, for electronic format documents, subject to Terms and Conditions for Electronic Documents at <http://www.sgs.com/en/Terms-and-Conditions/Terms-e-Documents.aspx>. Attention is drawn to the limitation of liability, indemnification and jurisdiction issues defined therein. Any holder of this document is advised that information contained hereon reflects the Company's findings at the time of its intervention only and within the limits of Client's instructions, if any. The Company's sole responsibility is to its Client and this document does not exonerate parties to a transaction from exercising all their rights and obligations under the transaction documents. This document cannot be reproduced except in full, without prior written approval of the Company. Any unauthorized alteration, forgery or falsification of the content or appearance of this document is unlawful and offenders may be prosecuted to the fullest extent of the law. Unless otherwise stated the results shown in this test report refer only to the sample(s) tested.

Attention: To check the authenticity of testing /inspection report & certificate, please contact us at telephone: (86-755) 8307 1443, or email: CN.Doccheck@sgs.com

198 Kezhu Road, Sciotech Park Guangzhou Economic & Technology Development District, Guangzhou, China 510663 t (86-20) 82155555 f (86-20) 82075113 www.sgsgroup.com.cn  
中国·广州·经济技术开发区科学城科珠路198号 邮编: 510663 t (86-20) 82155555 f (86-20) 82075113 e sgs.china@sgs.com

TO-247/TO-3P	SR3020PT SR3030PT SR3040PT SR3045PT SR3050PT SR3060PT SR3080PT SR30100PT SR30150PT SR30200PT SF301C SF302C SF303C SF304C SF305C SF306C SF307C SF308C MBR3020PT MBR3030PT MBR3040PT MBR3045PT MBR3050PT MBR3060PT MBR3080PT MBR30100PT MBR30150PT MBR30200PT
SS	SS120 SS130 SS140 SS150 SS160 SS180 SS190 SS1100 SS1150 SS1200 SS220 SS230 SS240 SS250 SS260 SS280 SS290 SS2100 SS2150 SS2200 SSU11 SSU12 SSU13 SSU14 SSU15 SSU16 SSU17 SSU18 SSH101 SSH102 88H103 SSH104 SSH105 SSH106 SSH107 SSH108 SSF101 SSF102SSF103 SSF103 SSF105 SSF106 SSF107 SS4001 SS4002 SS4003 SS4004 SS4005 SS4006 SS4007
DO-213AA	LM4001G LM4002G LM4003G LM4004G LM4005G LM4006G LM4007G LM101G LM102G LM103G LM104G LM105G LM106G LM107G LM5817G LM5818G LM5819G
SM-1/DO-213AB	SM120 SM130 SM140 SM150 SM160 SM180 SM1100 SMF101 SMF102 SMF103 SMF104SMF105 SMF106 SMF107 SM4001 SM4002 SM4003 SM4004 SM4005 SM4006 SM4007 DL4001 DL4002 DL4003 DL4004 DL4005 DL4006 DL4007 SM4933 SM4934 SM4935 SM4936 SM4937 SMU4001 SMU4002 SMU4003 SMU4004 SMU4005 SMU4006 SMU4007 SM5817 SM5818 SM5819



This document is issued by the Company subject to its General Conditions of Service printed overleaf, available on request or accessible at <http://www.sgs.com/en/Terms-and-Conditions.aspx> and, for electronic format documents, subject to Terms and Conditions for Electronic Documents at <http://www.sgs.com/en/Terms-and-Conditions/Terms-e-Documents.aspx>. Attention is drawn to the limitation of liability, indemnification and jurisdiction issues defined therein. Any holder of this document is advised that information contained hereon reflects the Company's findings at the time of its intervention only and within the limits of Client's instructions, if any. The Company's sole responsibility is to its Client and this document does not exonerate parties to a transaction from exercising all their rights and obligations under the transaction documents. This document cannot be reproduced except in full, without prior written approval of the Company. Any unauthorized alteration, forgery or falsification of the content or appearance of this document is unlawful and offenders may be prosecuted to the fullest extent of the law. Unless otherwise stated the results shown in this test report refer only to the sample(s) tested.

Attention: To check the authenticity of testing /inspection report & certificate, please contact us at telephone: (86-755) 8307 1443, or email: CN.Doccheck@sgs.com

SGS-CTI Standards Technical Services Co., Ltd.  
Guangzhou Chemical Laboratory

198 Kezhu Road, Sciotech Park Guangzhou Economic & Technology Development District, Guangzhou, China 510663 t (86-20) 82155555 f (86-20) 82075113 www.sgsgroup.com.cn  
中国·广州·经济技术开发区科学城科珠路198号 邮编: 510663 t (86-20) 82155555 f (86-20) 82075113 e sgs.china@sgs.com

SMA	<p>SM5817A SM5818A SM5819A SM120A SM130A SM140A SM150A  SM160A SM180A SM190A SM1100A SM1150A SM1 200A  SM220A SM230A SM240A SM250A SIVQ60A SM280A SM290A SM21  00A SM21 50A SM2200A SM320A SM330A SM340A SM350A SM360A  SM380A SM390A SM31 00A SM31 50A SM3200A SM520A SM530A  SM540A SM550A SM560A SM580A SM590A SM51 00A SM51 50A  SM5200A SMU11A SMU12A SMU13A SMU14A SMU15A SMU16A  SMU17A SMU18A SMU21A SMU22A SMU23A SMU24A SMU25A  SMU26A SMU27A SMU28A SMH101A SMH102A SMH103A SMH104A  SMH105A SMH106A SMH107A SMH108A SMH201A SMH202A  SMH203A SMH204A SMH205A SMH206A SMH207A SMH208A  SMF101A SMF102A SMF103A SMF104A SMF105A SMF106A  SMF107A SM4933A SM4934A SM4935A SM4936A SM4937A  SM4001A SM4002A SM4003A SM4004A SM4005A SM4006A  SM4007A M1 M2 M3 M4 M5 M6 M7 S1A S1B S1D S1G S1J S1K S1M  GS1A GS1B GS1D GS1G GS1J GS1K GS1M RS1A RS1B RS1D  RS1G RS1J RS1K RS1M US1A US1B US1D US1G US1J US1K US1M  ES1A ES1B ES1D ES1G ES1J ES1K ES1M  SS12 SS13 SS14 SS15 SS16 SS18 SS110 SS115 SS120  SS22 SS23 SS24 SS25 SS26 SS28 SS210 SS215 SS220  SS32 SS33 SS34 SS35 SS36 SS38 SS310 SS315 SS320  SS52 SS53 SS54 SS55 SS56 SS58 SS510 SS515 SS520  SK12 SK13 SK14 SK15 SK16 SK18 SK110 SK115 SK120  SK22 SK23 SK24 SK25 SK26 SK28 SK210 SK215 SK220  SK32 SK33 SK34 SK35 SK36 SK38 SK310 SK315 SK320  SK52 SK53 SK54 SK55 SK56 SK58 SK510 SK515 SK520  S2A S2B S2D S2G S2J S2K S2M GS2A GS2B GS2D GS2G GS2J  GS2K GS2M RS2A RS2B RS2D RS2G RS2J RS2K RS2M  US2A US2B US2D US2G US2J US2K US2M ES2A ES2B ES2D ES2G  ES2J ES2K ES2M</p>
-----	--



This document is issued by the Company subject to its General Conditions of Service printed overleaf, available on request or accessible at <http://www.sgs.com/en/Terms-and-Conditions.aspx> and, for electronic format documents, subject to Terms and Conditions for Electronic Documents at <http://www.sgs.com/en/Terms-and-Conditions/Terms-e-Documents.aspx>. Attention is drawn to the limitation of liability, indemnification and jurisdiction issues defined therein. Any holder of this document is advised that information contained hereon reflects the Company's findings at the time of its intervention only and within the limits of Client's instructions, if any. The Company's sole responsibility is to its Client and this document does not exonerate parties to a transaction from exercising all their rights and obligations under the transaction documents. This document cannot be reproduced except in full, without prior written approval of the Company. Any unauthorized alteration, forgery or falsification of the content or appearance of this document is unlawful and offenders may be prosecuted to the fullest extent of the law. Unless otherwise stated the results shown in this test report refer only to the sample(s) tested.

Attention: To check the authenticity of testing /inspection report & certificate, please contact us at telephone: (86-755) 8307 1443, or email: CN.Doccheck@sgs.com

SOD-123FL	<p>SM120M SM130M SM140M SM150M SM160M SM180M SM190M  SM1100M SMU11M SMU12M SMU13M SMU14M SMU15M SMU16M  SMU17M SMU18M SMH101M SMH102M SMH103M SMH104M  SMH105M SMH106M SMH107M SMH108M SMF101M SMF102M  SMF103M SMF104M SMF105M SMF106M SMF107M  DSR1A DSR1B DSR1D DSR1G DSR1J DSR1K DSR1M  DFR1A DFR1B DFR1D DFR1G DFR1J DFR1K DFR1M  RS07A RS07B RS07D RS07G RS07J RS07K RS07M  DUF1A DUF1B DUF1D DUF1G DUF1J DUF1K DUF1M  DSF1A DSF1B DSF1D DSF1G DSF1J DSF1K DSF1M  B5817W B5818W B5819W S1TA1 A2 A3 A4 A5 A6 A7  D1 D2 D3 D4 D5 D6 D7 T1 T2 T3 T4 T5 T6 T7 S1A S1B S1D S1G S1J  S1K S1M F1 F2 F3 F4 F5 F6 F7 F1A F1B F1D F1G F1J F1K F1M  U1A U1B U1D U1G U1J U1K U1M E1A E1B E1D E1G E1J E1K E1M  K2 K3 K4 K12 K13 K14 K15 K16 K18 K10 K22 K23 K24 K25 K26 K28  K210 K32 K33 K34 K35 K36 K38 K310 GP GQ GR  SS1020FL SS1030FL SS1040FL SS1060FL SS1080FL SS10100FL  SS2020FL SS2030FL SS2040FL SS2060FL SS2080FL SS20100FL  SS3020FL SS3030FL SS3040FL SS3060FL SS3080FL SS30100FL  SS5020FL SS5030FL SS5040FL SS5060FL SS5080FL SS50100FL  SMF6.8~440A(AC)</p>
-----------	---



This document is issued by the Company subject to its General Conditions of Service printed overleaf, available on request or accessible at <http://www.sgs.com/en/Terms-and-Conditions.aspx> and, for electronic format documents, subject to Terms and Conditions for Electronic Documents at <http://www.sgs.com/en/Terms-and-Conditions/Terms-e-Documents.aspx>. Attention is drawn to the limitation of liability, indemnification and jurisdiction issues defined therein. Any holder of this document is advised that information contained hereon reflects the Company's findings at the time of its intervention only and within the limits of Client's instructions, if any. The Company's sole responsibility is to its Client and this document does not exonerate parties to a transaction from exercising all their rights and obligations under the transaction documents. This document cannot be reproduced except in full, without prior written approval of the Company. Any unauthorized alteration, forgery or falsification of the content or appearance of this document is unlawful and offenders may be prosecuted to the fullest extent of the law. Unless otherwise stated the results shown in this test report refer only to the sample(s) tested.

Attention: To check the authenticity of testing /inspection report & certificate, please contact us at telephone: (86-755) 8307 1443, or email: [CN.Doccheck@sgs.com](mailto:CN.Doccheck@sgs.com)

198 Kezhu Road, Sciencetech Park Guangzhou Economic & Technology Development District, Guangzhou, China 510663 t (86-20) 82155555 f (86-20) 82075113 www.sgs.com.cn  
中国·广州·经济技术开发区科学城科珠路198号 邮编: 510663 t (86-20) 82155555 f (86-20) 82075113 e [sgs.china@sgs.com](mailto:sgs.china@sgs.com)

SMB	<p>SM220B SM230B SM240B SM250B SM260B SM280B SM290B  SM2100B SM2150B SM2200B SM5820B SM5821B SM5822B  SM320B SM330B SM340B SM350B SM360B SM380B SM390B  SM3100B SM3150B SM3200B SM520B SM530B SM540B SM550B  SM560B SM580B SM590B SM5100B SM5150B SM5200B  SMU21B SMU22B SMU23B SMU24B SMU25B SMU26B SMU27B  SMU28B SMU31B SMU32B SMU33B SMU34B SMU35B SMU36B  SMU37B SMU38B SMH201B SMH202B SMH203B SMH204B  SMH205B SMH206B SMH207B SMH208B SMH301B SMH302B  SMH303B SMH304B SMH305B SMH306B SMH307B SMH308B  SMF201B SMF202B SMF203B SMF204B SMF205B SMF206B  SMF207B SMF301B SMF302B SMF303B SMF304B SMF305B  SMF306B SMF307B SS22 SS23 SS24 SS25 SS26 SS28 SS210 SS215  SS220SS32 SS33 SS34 SS35 SS36 SS38 SS310 SS315 SS320  SS52 SS53 SS54 SS55 SS56 SS58 SS510 SS515 SS520  SK22 SK23 SK24 SK25 SK26 SK28 SK210 SK215 SK220  SK32 SK33 SK34 SK35 SK36 SK38 SK310 SK315 SK320  SK52 SK53 SK54 SK55 SK56 SK58 SK510 SK515 SK520  S2A S2B S2D S2G S2J S2K S2M GS2A GS2B GS2D GS2G GS2J  GS2K GS2M RS2A RS2B RS2D RS2G RS2J RS2K RS2M US2A  US2B US2D US2G US2J US2K US2M ES2A ES2B ES2D ES2G ES2J  ES2K ES2M S3A S3B S3D S3G S3J S3K S3M GS3A GS3B GS3D  GS3G GS3J GS3K GS3M RS3A RS3B RS3D RS3G RS3J RS3K  RS3M  US3A US3B US3D US3G US3J US3K US3M ES3A ES3B ES3D ES3G  ES3J ES3K ES3M</p>
-----	---



This document is issued by the Company subject to its General Conditions of Service printed overleaf, available on request or accessible at <http://www.sgs.com/en/Terms-and-Conditions.aspx> and, for electronic format documents, subject to Terms and Conditions for Electronic Documents at <http://www.sgs.com/en/Terms-and-Conditions/Terms-e-Documents.aspx>. Attention is drawn to the limitation of liability, indemnification and jurisdiction issues defined therein. Any holder of this document is advised that information contained hereon reflects the Company's findings at the time of its intervention only and within the limits of Client's instructions, if any. The Company's sole responsibility is to its Client and this document does not exonerate parties to a transaction from exercising all their rights and obligations under the transaction documents. This document cannot be reproduced except in full, without prior written approval of the Company. Any unauthorized alteration, forgery or falsification of the content or appearance of this document is unlawful and offenders may be prosecuted to the fullest extent of the law. Unless otherwise stated the results shown in this test report refer only to the sample(s) tested.

Attention: To check the authenticity of testing /inspection report & certificate, please contact us at telephone: (86-755) 8307 1443, or email: CN.Doccheck@sgs.com

198 Kezhu Road, Sciencetech Park Guangzhou Economic & Technology Development District, Guangzhou, China 510663 t (86-20) 82155555 f (86-20) 82075113 www.sgsgroup.com.cn  
中国·广州·经济技术开发区科学城科珠路198号 邮编: 510663 t (86-20) 82155555 f (86-20) 82075113 e sgs.china@sgs.com



SMC	<p>SM320C SM330C SM340C SM350C SM360C SM380C SM390C  SM3100C SM3150C SM3200C SM520C SM530C SM540C SM550C  SM560C SM580C SM590C SM5100C SM5150C SM5200C SMU31C  SMU32C SMU33C SMU34C SMU35C SMU36C SMU37C SMU38C  SMU51C SMU52C SMU53C SMU54C SMU55C SMU56C SMU57C  SMU58C SMH301C SMH302C SMH303C SMH304C SMH305C  SMH306C SMH307C SMH308C SMF301C SMF302C SMF303C  SMF304C SMF305C SMF306C SMF307C S3A S3B S3D S36 S3J S3K  S3M S5A S5B S5D S56 S5J S5K S5M GS3A GS3B GS3D GS3G GS3J  GS3K GS3M GS5A GS5B GS5D GS5G GS5J GS5K GS5M RS3A  RS3B RS3D RS3G RS3J RS3K RS3M RS5A RS5B RS5D RS5G RS5J  RS5K RS5M US3A US3B US3D US3G US3J US3K US3M US5A US5B  US5D US5G US5J US5K US5M ES3A ES3B ES3D ES3G ES3J ES3K  ES3M ES5A ES5B ES5D ES5G ES5J ES5K ES5M SS32 SS33 SS34  SS35 SS36 SS38 SS310 SS315 SS320 SS52 SS53 SS54 SS55 SS56  SS58 SS510 SS515 SS520 SK32 SK33 SK34 SK35 SK36 SK38 SK310  SK315 SK320 SK52 SK53 SK54 SK55 SK56 SK58 SK510 SK515 SK520  SK82 SK83 SK84 SK85 SK86 SK88 SK810 SK815 SK820</p>
MDS	<p>MD1S MD2S MD3SS MD4S MD5S MD6S MD7S  MB1S MB2S MB4S MB5S MB6S MB8S MB10S</p>
DB-1	<p>DB101 DB102 DB103 DB104 DB105 DB106 DB107  DB151 DB152 DB153 DB154 DB155 DB156 DB157  DB201 DB202 DB203 DB204 DB205 DB206 DB207</p>
DB-1S	<p>DB101S DB102S DB103S DB104S DB105S DB106S DB107S  DB151S DB152S DB153S DB154S DB155S DB156S DB157S  DB201S DB202S DB203S DB204S DB205S DB206S DB207S</p>



This document is issued by the Company subject to its General Conditions of Service printed overleaf, available on request or accessible at <http://www.sgs.com/en/Terms-and-Conditions.aspx> and, for electronic format documents, subject to Terms and Conditions for Electronic Documents at <http://www.sgs.com/en/Terms-and-Conditions/Terms-e-Documents.aspx>. Attention is drawn to the limitation of liability, indemnification and jurisdiction issues defined therein. Any holder of this document is advised that information contained hereon reflects the Company's findings at the time of its intervention only and within the limits of Client's instructions, if any. The Company's sole responsibility is to its Client and this document does not exonerate parties to a transaction from exercising all their rights and obligations under the transaction documents. This document cannot be reproduced except in full, without prior written approval of the Company. Any unauthorized alteration, forgery or falsification of the content or appearance of this document is unlawful and offenders may be prosecuted to the fullest extent of the law. Unless otherwise stated the results shown in this test report refer only to the sample(s) tested.

Attention: To check the authenticity of testing /inspection report & certificate, please contact us at telephone: (86-755) 8307 1443, or email: CN.Doccheck@sgs.com

DFS	DF005S DF01S DF02S DF04S DF06S DF08S DF10S
RS-1	RS101 RS102 RS103 RS104 RS105 RS106 RS107
RB-15	RB151 RB152 RB153 RB154 RB155 RB156 RB157
WOM	W005M W01M W02M W04M W06M W08M W10M W005 W01 W02 W04 W06 W08 W10
WOL	2W005 2W01 2W02 2W04 2W06 2W08 2W10
WOM-S	W005S W01S W02S W04S W06S W08S W10S
RS-2	RS201 RS202 RS203 RS204 RS205 RS206 RS207
KBP	KBP2005 KBP201 KBP202 KBP204 KBP206 KBP208 KBP210 KBP201 KBP202 KBP203 KBP204 KBP205 KBP206 KBP207 KBP3005 KBP301 KBP302 KBP304 KBP306 KBP308 KBP310 KBP301 KBP302 KBP303 KBP304 KBP305 KBP306 KBP307
RS-2M	RS201M RS202M RS203M RS204M RS205M RS206M RS207M
BR-3	BR305 BR31 BR32 BR34 BR36 BR38 BR310
RS-4L	RS401L RS402L RS403L RS404L RS405L RS406L RS407L
KBL	KBL401 KBL402 KBL403 KBL404 KBL405 KBL406 KBL407 KBL005 KBL01 KBL02 KBL04 KBL06 KBL08 KBL10 KBL6005 KBL601 KBL602 KBL604 KBL606 KBL608 KBL610
KBJ	KBJ401 KBJ402 KBJ403 KBJ404 KBJ405 KBJ406 KBJ407 KBJ601 KBJ602 KBJ603 KBJ604 KBJ605 KBJ606 KBJ607 KBJ801 KBJ802 KBJ803 KBJ804 KBJ805 KBJ806 KBJ807 KBJ1001 KBJ1002 KBJ1003 KBJ1004 KBJ1005 KBJ1006 KBJ1007 KBJ1501 KBJ1502 KBJ1503 KBJ1504 KBJ1505 KBJ1506 KBJ1507 KBJ2001 KBJ2002 KBJ2003 KBJ2004 KBJ2005 KBJ2006 KBJ2007



This document is issued by the Company subject to its General Conditions of Service printed overleaf, available on request or accessible at <http://www.sgs.com/en/Terms-and-Conditions.aspx> and, for electronic format documents, subject to Terms and Conditions for Electronic Documents at <http://www.sgs.com/en/Terms-and-Conditions/Terms-e-Documents.aspx>. Attention is drawn to the limitation of liability, indemnification and jurisdiction issues defined therein. Any holder of this document is advised that information contained hereon reflects the Company's findings at the time of its intervention only and within the limits of Client's instructions, if any. The Company's sole responsibility is to its Client and this document does not exonerate parties to a transaction from exercising all their rights and obligations under the transaction documents. This document cannot be reproduced except in full, without prior written approval of the Company. Any unauthorized alteration, forgery or falsification of the content or appearance of this document is unlawful and offenders may be prosecuted to the fullest extent of the law. Unless otherwise stated the results shown in this test report refer only to the sample(s) tested.

Attention: To check the authenticity of testing /inspection report & certificate, please contact us at telephone: (86-755) 8307 1443, or email: CN.Doccheck@sgs.com

198 Kezhu Road, Sciencetech Park Guangzhou Economic & Technology Development District, Guangzhou, China 510663 t (86-20) 82155555 f (86-20) 82075113 www.sgs.com.cn  
中国·广州·经济技术开发区科学城科珠路198号 邮编: 510663 t (86-20) 82155555 f (86-20) 82075113 e sgs.china@sgs.com

KBU	KBU401 KBU402 KBU403 KBU404 KBU405 KBU406 KBU407 KBU601 KBU602 KBU603 KBU604 KBU605 KBU606 KBU607 KBU801 KBU802 KBU803 KBU804 KBU805 KBU806 KBU807 KBU1001 KBU1002 KBU1003 KBU1004 KBU1005 KBU1006 KBU1007 RS801 RS802 RS803 RS804 RS805 RS806 RS807
GBU	GBU401 GBU402 GBU403 GBU404 GBU405 GBU406 GBU407 GBU601 GBU602 GBU603 GBU604 GBU605 GBU606 GBU607 GBU801 GBU802 GBU803 GBU804 GBU805 GBU806 GBU807 GBU1001 GBU1002 GBU1003 GBU1004 GBU1005 GBU1006 GBU1007 GBU1501 GBU1502 GBU1503 GBU1504 GBU1505 GBU1506 GBU1507
GBL	GBL201 GBL202 GBL203 GBL204 GBL205 GBL206 GBL207 GBL401 GBL402 GBL403 GBL404 GBL405 GBL406 GBL407
GBJ	GBJ401 GBJ402 GBJ403 GBJ404 GBJ405 GBJ406 GBJ407 GBJ601 GBJ602 GBJ603 GBJ604 GBJ605 GBJ606 GBJ607 GBJ801 GBJ802 GBJ803 GBJ804 GBJ805 GBJ806 GBJ807 GBJ1001 GBJ1002 GBJ1003 GBJ1004 GBJ1005 GBJ1006 GBJ1007 GBJ1501 GBJ1502 GBJ1503 GBJ1504 GBJ1505 GBJ1506 GBJ1 507 GBJ2001 GBJ2002 GBJ2003 GBJ2004 GBJ2005 GBJ2006 GBJ2007 GBJ2501 GBJ2502 GBJ2503 GBJ2504 GBJ2505 GBJ2506 GBJ2507



This document is issued by the Company subject to its General Conditions of Service printed overleaf, available on request or accessible at <http://www.sgs.com/en/Terms-and-Conditions.aspx> and, for electronic format documents, subject to Terms and Conditions for Electronic Documents at <http://www.sgs.com/en/Terms-and-Conditions/Terms-e-Documents.aspx>. Attention is drawn to the limitation of liability, indemnification and jurisdiction issues defined therein. Any holder of this document is advised that information contained hereon reflects the Company's findings at the time of its intervention only and within the limits of Client's instructions, if any. The Company's sole responsibility is to its Client and this document does not exonerate parties to a transaction from exercising all their rights and obligations under the transaction documents. This document cannot be reproduced except in full, without prior written approval of the Company. Any unauthorized alteration, forgery or falsification of the content or appearance of this document is unlawful and offenders may be prosecuted to the fullest extent of the law. Unless otherwise stated the results shown in this test report refer only to the sample(s) tested.

Attention: To check the authenticity of testing /inspection report & certificate, please contact us at telephone: (86-755) 8307 1443, or email: [CN.Doccheck@sgs.com](mailto:CN.Doccheck@sgs.com)

SGS Standards Technical Services Co., Ltd.  
Guangzhou Chemical Laboratory

198 Kezhu Road, Sciencetech Park Guangzhou Economic & Technology Development District, Guangzhou, China 510663 t (86-20) 82155555 f (86-20) 82075113 www.sgsgroup.com.cn  
中国·广州·经济技术开发区科学城科珠路198号 邮编: 510663 t (86-20) 82155555 f (86-20) 82075113 e [sgs.china@sgs.com](mailto:sgs.china@sgs.com)

KBPC	KBPC6005 KBPC601 KBPC602 KBPC604 KBPC606 KBPC608 KBPC610 KBPC8005 KBPC801 KBPC802 KBPC804 KBPC806 KBPC808 KBPC810 KBPC1005 KBPC1001 KBPC1002 KBPC1004 KBPC1006 KBPC1008 KBPC1010 KBPC1505 KBPC1501 KBPC1502 KBPC1504 KBPC1506 KBPC1508 KBPC1510 KBPC2005 KBPC2001 KBPC2002 KBPC2004 KBPC2006 KBPC2008 KBPC2010 KBPC2505 KBPC2501 KBPC2502 KBPC2504 KBPC2506 KBPC2508 KBPC2510 KBPC3505 KBPC3501 KBPC3502 KBPC3504 KBPC3506 KBPC3508 KBPC3510 KBPC5005 KBPC5001 KBPC5002 KBPC5004 KBPC5006 KBPC5008 KBPC5010
BR-6	BR605 BR61 BR62 BR64 BR66 BR68 BR610
BR-8	BR805 BR81 BR82 BR84 BR86 B R88 BR810
BR-10	BR1005 BR101 BR102 BR104 BR106 BR108 BR1010
MB	MB1505 MB151 MB152 MB154 MB156 MB158 MB1510 MB2505 MB251 M8252 MB254 MB256 MB258 MB2510 MB3505 MB351 MB352 MB354 MB356 MB358 MB3510
MB-W	MB1505W MB151W MB152W MB154W MB156W MB158W MB1510W MB2505W MB251W MB252W MB254W MB256W MB258W MB2510W MB3505W MB351W MB352W MB354W MB356W MB358W MB3510W
MP	MP1505 MP151 MP152 MP154 MP156 MP158 MP1510 MP2505 MP251 MP252 MP254 MP256 MP258 MP2510 MP3505 MP351 MP352 MP354 MP356 MP358 MP3510



This document is issued by the Company subject to its General Conditions of Service printed overleaf, available on request or accessible at <http://www.sgs.com/en/Terms-and-Conditions.aspx> and, for electronic format documents, subject to Terms and Conditions for Electronic Documents at <http://www.sgs.com/en/Terms-and-Conditions/Terms-e-Documents.aspx>. Attention is drawn to the limitation of liability, indemnification and jurisdiction issues defined therein. Any holder of this document is advised that information contained hereon reflects the Company's findings at the time of its intervention only and within the limits of Client's instructions, if any. The Company's sole responsibility is to its Client and this document does not exonerate parties to a transaction from exercising all their rights and obligations under the transaction documents. This document cannot be reproduced except in full, without prior written approval of the Company. Any unauthorized alteration, forgery or falsification of the content or appearance of this document is unlawful and offenders may be prosecuted to the fullest extent of the law. Unless otherwise stated the results shown in this test report refer only to the sample(s) tested.

Attention: To check the authenticity of testing /inspection report & certificate, please contact us at telephone: (86-755) 8307 1443, or email: CN.Doccheck@sgs.com

198 Kezhu Road, Sciotech Park Guangzhou Economic & Technology Development District, Guangzhou, China 510663 t (86-20) 82155555 f (86-20) 82075113 www.sgs.com.cn  
中国·广州·经济技术开发区科学城科珠路198号 邮编: 510663 t (86-20) 82155555 f (86-20) 82075113 e sgs.china@sgs.com

MP-W	MP1505W MP151W MP152W MP154W MP156W MP158W MP1510W MP2505W MP251W MP252W MP254W MP256W MP258W MP2510W MP3505W MP351W MP352W MP354W MP356W MP358W MP3510W
AR	AR2505 AR251 AR252 AR254 AR256 AR258 AR2510 AR3505 AR351 AR352 AR354 AR356 AR358 AR3510
ABS	AB1S AB2S AB3S AB4S AB5S AB6S AB7S ABS05 ABS1 ABS2 ABS4 ABS6 ABS8 ABS10 TB1S TS2S TB3S TB4S TB5S TB6S TB7S TB05S TB1S TB2S TB4S TB6S TB8S TB10S
ADS	AD1S AD2S AD3S AD4S AD5S AD6S AD7S
MBF	MB05F MB1F MB2F MB4F MB6F MB8F MB10F MBF12 MBF13 MBF14 MBF15 MBF16 MBF18 MBF110
MBM	MB05M MB1M MB2M MB4M MB6M MB8M MB10M
LBS	LB05S LB1S LB2S LB4S LB6S LB8S LB10S
ABF	DBS05 DBS1 DBS2 DBS4 DBS6 DBS8 DBS10
TO-277	SB1020L SB1040L SB1045L SB1060L SB1080L SB10100L SB10120L SB10150L SB10200L SB1520L SB1540L SB1545L SB1560L SB1580L SB15100L SB15120L SB15150L SB15200L SB2020L SB2040L SB2045L SB2060L SB2080L SB20100L SB20120L SB20150L SB20200L
SOD323	SM5819WS



This document is issued by the Company subject to its General Conditions of Service printed overleaf, available on request or accessible at <http://www.sgs.com/en/Terms-and-Conditions.aspx> and, for electronic format documents, subject to Terms and Conditions for Electronic Documents at <http://www.sgs.com/en/Terms-and-Conditions/Terms-e-Documents.aspx>. Attention is drawn to the limitation of liability, indemnification and jurisdiction issues defined therein. Any holder of this document is advised that information contained hereon reflects the Company's findings at the time of its intervention only and within the limits of Client's instructions, if any. The Company's sole responsibility is to its Client and this document does not exonerate parties to a transaction from exercising all their rights and obligations under the transaction documents. This document cannot be reproduced except in full, without prior written approval of the Company. Any unauthorized alteration, forgery or falsification of the content or appearance of this document is unlawful and offenders may be prosecuted to the fullest extent of the law. Unless otherwise stated the results shown in this test report refer only to the sample(s) tested.

Attention: To check the authenticity of testing /inspection report & certificate, please contact us at telephone: (86-755) 8307 1443, or email: CN.Doccheck@sgs.com

SMAF	<p>M1F M2F M3F M4F M5F M6F M7F S1AF S1BF S1DF S1GF S1JF  S1KF S1MF GS1AF GS1BF GS1DF GS1GF GS1JF GS1KF GS1MF  RS1AF RS1BF RS1DF RS1GF RS1JF RS1KF RS1MF  US1AF US1BF US1DF US1GF US1JF US1KF US1MF  ES1AF ES1BF ES1DF ES1GF ES1JF ES1KF ES1MF  SS12F SS13F SS14F SS15F SS16F SS18F SS110F SS115F SS120F  SS22F SS23F SS24F SS25F SS26F SS28F SS210F SS215F SS220F  SS32F SS33F SS34F SS35F SS36F SS38F SS310F SS315F SS320F  SS52F SS53F SS54F SS55F SS56F SS58F SS510F SS515F SS520F  SK12F SK13F SK14F SK15F SK16F SK18F SK110F SK115F SK120F  SK22F SK23F SK24F SK25F SK26F SK28F SK210F SK215F SK220F  SK32F SK33F SK34F SK35F SK36F SK38F SK310F SK315F SK320F  SK52F SK53F SK54F SK55F SK56F SK58F SK510F SK515F SK520F  S2AF S2BF S2DF S2GF S2JF S2KF S2MF GS2AF GS2BF GS2DF  GS2GF GS2JF GS2KF GS2MF RS2AF RS2BF RS2DF RS2GF RS2JF  RS2KF RS2MF US2AF US2BF US2DF US2GF US2JF US2KF US2MF  ES2AF ES2BF ES2DF ES2GF ES2JF ES2KF ES2MF</p>
------	--



This document is issued by the Company subject to its General Conditions of Service printed overleaf, available on request or accessible at <http://www.sgs.com/en/Terms-and-Conditions.aspx> and, for electronic format documents, subject to Terms and Conditions for Electronic Documents at <http://www.sgs.com/en/Terms-and-Conditions/Terms-e-Documents.aspx>. Attention is drawn to the limitation of liability, indemnification and jurisdiction issues defined therein. Any holder of this document is advised that information contained hereon reflects the Company's findings at the time of its intervention only and within the limits of Client's instructions, if any. The Company's sole responsibility is to its Client and this document does not exonerate parties to a transaction from exercising all their rights and obligations under the transaction documents. This document cannot be reproduced except in full, without prior written approval of the Company. Any unauthorized alteration, forgery or falsification of the content or appearance of this document is unlawful and offenders may be prosecuted to the fullest extent of the law. Unless otherwise stated the results shown in this test report refer only to the sample(s) tested.

Attention: To check the authenticity of testing /inspection report & certificate, please contact us at telephone: (86-755) 8307 1443, or email: CN.Doccheck@sgs.com

198 Kezhu Road, Sciencetech Park Guangzhou Economic & Technology Development District, Guangzhou, China 510663 t (86-20) 82155555 f (86-20) 82075113 www.sgs.com.cn  
中国·广州·经济技术开发区科学城科珠路198号 邮编: 510663 t (86-20) 82155555 f (86-20) 82075113 e sgs.china@sgs.com

SMBF	SS22F SS23F SS24F SS25F SS26F SS28F SS210F SS215F SS220F SS32F SS33F SS34F SS35F SS36F SS38F SS310F SS315F SS320F SS52F SS53F SS54F SS55F SS56F SS58F SS510F SS515F SS520F SK22F SK23F SK24F SK25F SK26F SK28F SK210F SK215F SK220F SK32F SK33F SK34F SK35F SK36F SK38F SK310F SK315F SK320F SK52F SK53F SK54F SK55F SK56F SK58F SK510F SK515F SK520F S2AF S2BF S2DF S2GF S2JF S2KF S2MF GS2AF GS2BF GS2DF GS2GF GS2JF GS2KF GS2MF RS2AF RS2BF RS2DF RS2GF RS2JF RS2KF RS2MF US2AF US2BF US2DF US2GF US2JF US2KF US2MF ES2AF ES2BF ES2DF ES2GF ES2JF ES2KF ES2MF S3AF S3BF S3DF S3GF S3JF S3KF S3MF GS3AF GS3BF GS3DF GS3GF GS3JF GS3KF GS3MF RS3AF RS3BF RS3DF RS3GF RS3JF RS3KF RS3MF US3AF US3BF US3DF US3GF US3JF US3KF US3MF ES3AF ES3BF ES3DF ES3GF ES3JF ES3KF ES3MF
LL-34	LL4148
SOD-123	1N4148W



This document is issued by the Company subject to its General Conditions of Service printed overleaf, available on request or accessible at <http://www.sgs.com/en/Terms-and-Conditions.aspx> and, for electronic format documents, subject to Terms and Conditions for Electronic Documents at <http://www.sgs.com/en/Terms-and-Conditions/Terms-e-Documents.aspx>. Attention is drawn to the limitation of liability, indemnification and jurisdiction issues defined therein. Any holder of this document is advised that information contained hereon reflects the Company's findings at the time of its intervention only and within the limits of Client's instructions, if any. The Company's sole responsibility is to its Client and this document does not exonerate parties to a transaction from exercising all their rights and obligations under the transaction documents. This document cannot be reproduced except in full, without prior written approval of the Company. Any unauthorized alteration, forgery or falsification of the content or appearance of this document is unlawful and offenders may be prosecuted to the fullest extent of the law. Unless otherwise stated the results shown in this test report refer only to the sample(s) tested.

Attention: To check the authenticity of testing /inspection report & certificate, please contact us at telephone: (86-755) 8307 1443, or email: [CN.Doccheck@sgs.com](mailto:CN.Doccheck@sgs.com)

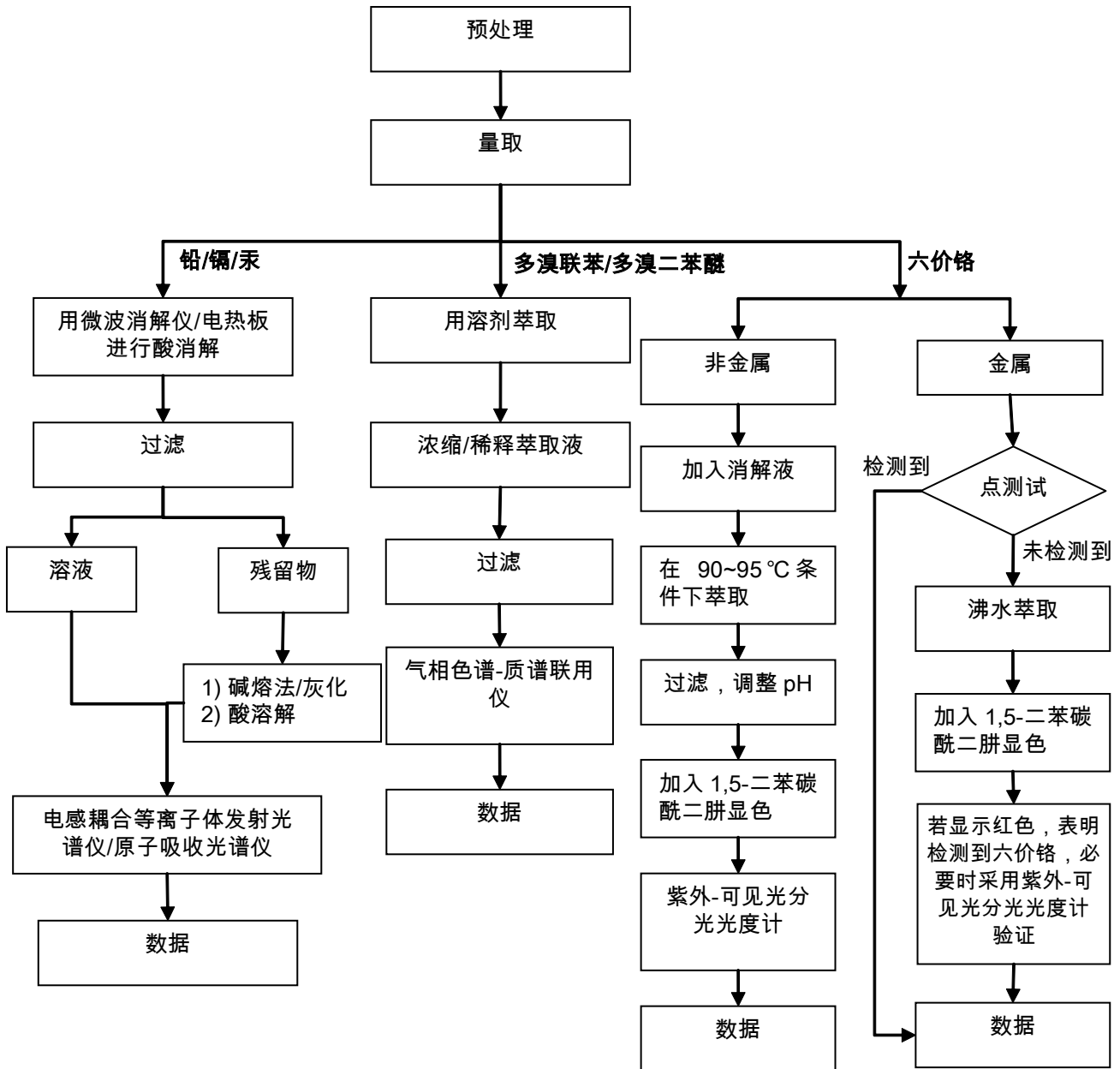
SGS Standards Technical Services Co., Ltd.  
Guangzhou Chemical Laboratory

198 Kezhu Road, Sciencetech Park Guangzhou Economic & Technology Development District, Guangzhou, China 510663 t (86-20) 82155555 f (86-20) 82075113 www.sgs.com.cn  
中国·广州·经济技术开发区科学城科珠路198号 邮编: 510663 t (86-20) 82155555 f (86-20) 82075113 e [sgs.china@sgs.com](mailto:sgs.china@sgs.com)

附件

### RoHS 测试流程图

- 1) 分析人员：肖戈 / 胡香云
- 2) 项目负责人：汪丹 / 余晓璐
- 3) 样品按照下述流程被完全消解（六价铬和多溴联苯/多溴二苯醚测试除外）。



This document is issued by the Company subject to its General Conditions of Service printed overleaf, available on request or accessible at <http://www.sgs.com/en/Terms-and-Conditions.aspx> and, for electronic format documents, subject to Terms and Conditions for Electronic Documents at <http://www.sgs.com/en/Terms-and-Conditions/Terms-e-Document.aspx>. Attention is drawn to the limitation of liability, indemnification and jurisdiction issues defined therein. Any holder of this document is advised that information contained herein reflects the Company's findings at the time of its intervention only and within the limits of Client's instructions, if any. The Company's sole responsibility is to its Client and this document does not exonerate parties to a transaction from exercising all their rights and obligations under the transaction documents. This document cannot be reproduced except in full, without prior written approval of the Company. Any unauthorized alteration, forgery or falsification of the content or appearance of this document is unlawful and offenders may be prosecuted to the fullest extent of the law. Unless otherwise stated the results shown in this test report refer only to the sample(s) tested.

Attention: To check the authenticity of testing /inspection report & certificate, please contact us at telephone: (86-755) 8307 1443, or email: CN.Doccheck@sgs.com

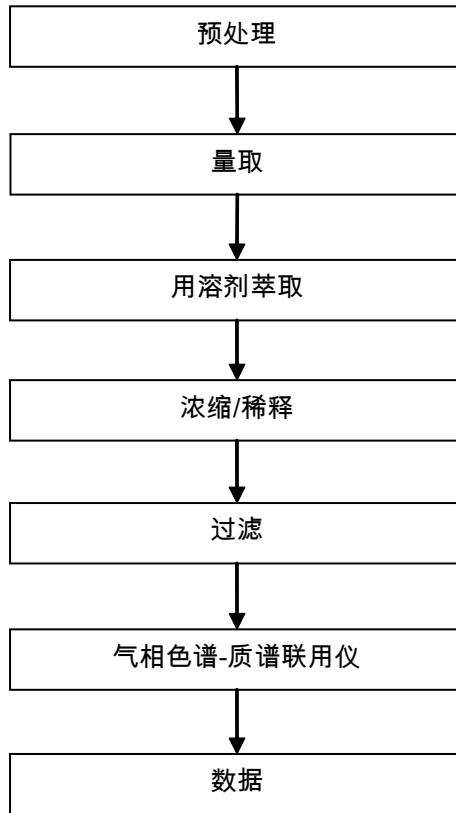
198 Kezhu Road, Sciencetech Park Guangzhou Economic & Technology Development District, Guangzhou, China 510663 t (86-20) 82155555 f (86-20) 82075113 www.sgsgroup.com.cn  
 中国·广州·经济技术开发区科学城科珠路198号 邮编: 510663 t (86-20) 82155555 f (86-20) 82075113 e sgs.china@sgs.com



附件

### HBCDD 测试流程图

- 1) 分析人员: 胡香云
- 2) 项目负责人: 余晓璐



This document is issued by the Company subject to its General Conditions of Service printed overleaf, available on request or accessible at <http://www.sgs.com/en/Terms-and-Conditions.aspx> and, for electronic format documents, subject to Terms and Conditions for Electronic Documents at <http://www.sgs.com/en/Terms-and-Conditions/Terms-e-Documents.aspx>. Attention is drawn to the limitation of liability, indemnification and jurisdiction issues defined therein. Any holder of this document is advised that information contained hereon reflects the Company's findings at the time of its intervention only and within the limits of Client's instructions, if any. The Company's sole responsibility is to its Client and this document does not exonerate parties to a transaction from exercising all their rights and obligations under the transaction documents. This document cannot be reproduced except in full, without prior written approval of the Company. Any unauthorized alteration, forgery or falsification of the content or appearance of this document is unlawful and offenders may be prosecuted to the fullest extent of the law. Unless otherwise stated the results shown in this test report refer only to the sample(s) tested.

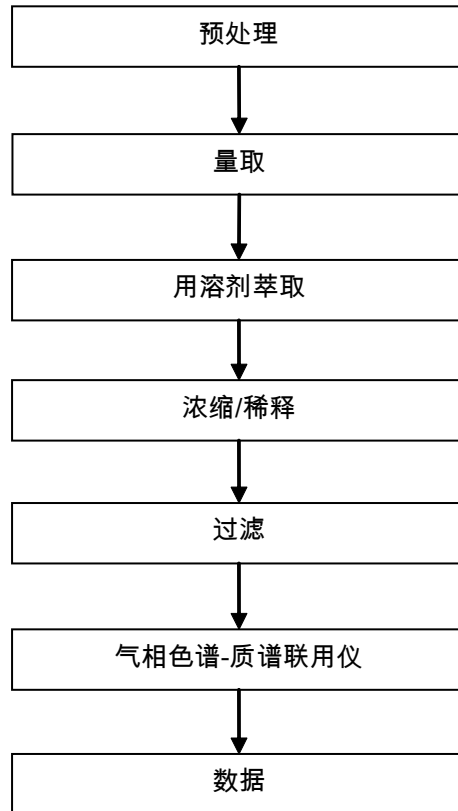
Attention: To check the authenticity of testing /inspection report & certificate, please contact us at telephone: (86-755) 8307 1443, or email: [CN.Doccheck@sgs.com](mailto:CN.Doccheck@sgs.com)

198 Kezhu Road, Sciotech Park Guangzhou Economic & Technology Development District, Guangzhou, China 510663 t (86-20) 82155555 f (86-20) 82075113 www.sgsgroup.com.cn  
中国·广州·经济技术开发区科学城科珠路198号 邮编: 510663 t (86-20) 82155555 f (86-20) 82075113 e [sgs.china@sgs.com](mailto:sgs.china@sgs.com)

附件

### Phthalates 测试流程图

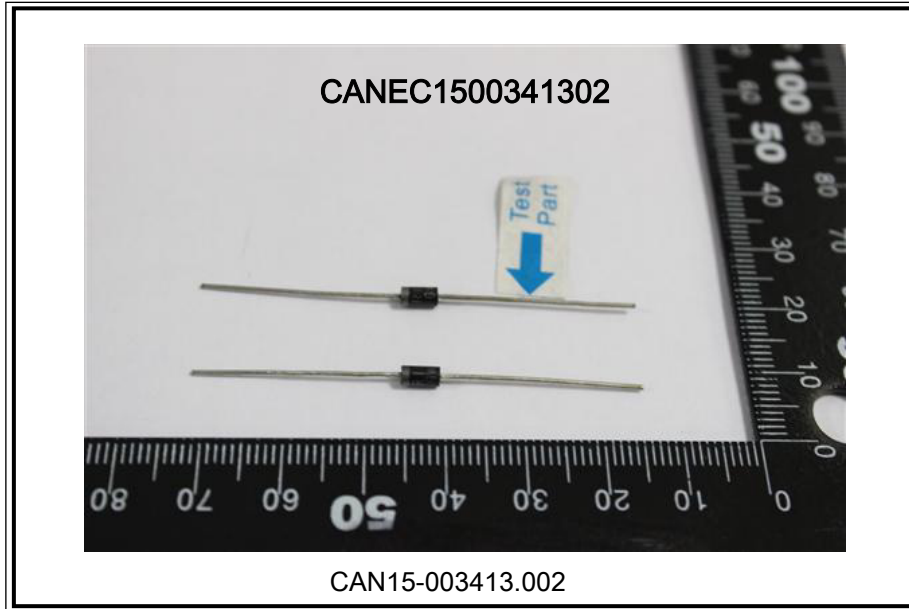
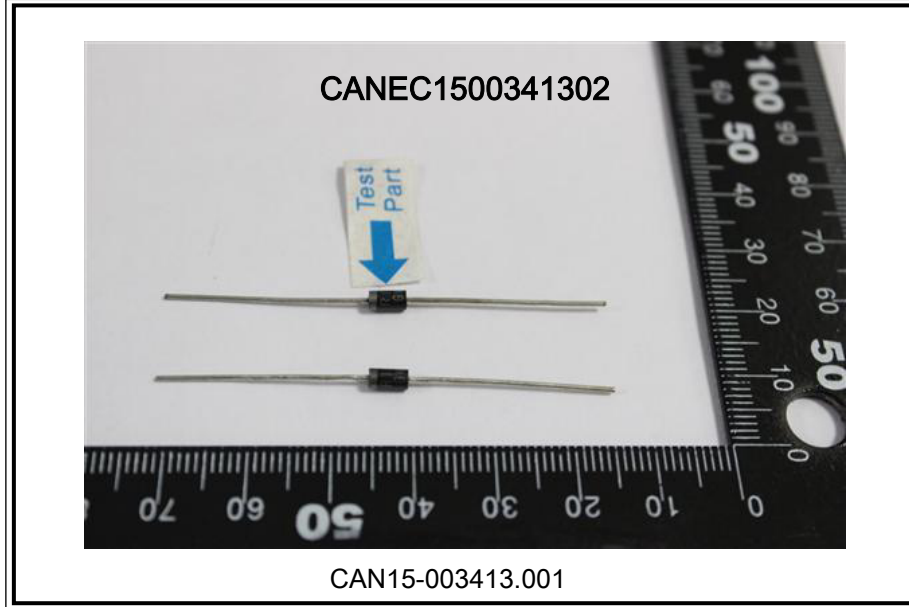
- 1) 分析人员：胡香云
- 2) 项目负责人：余晓璐



This document is issued by the Company subject to its General Conditions of Service printed overleaf, available on request or accessible at <http://www.sgs.com/en/Terms-and-Conditions.aspx> and, for electronic format documents, subject to Terms and Conditions for Electronic Documents at <http://www.sgs.com/en/Terms-and-Conditions/Terms-e-Documents.aspx>. Attention is drawn to the limitation of liability, indemnification and jurisdiction issues defined therein. Any holder of this document is advised that information contained hereon reflects the Company's findings at the time of its intervention only and within the limits of Client's instructions, if any. The Company's sole responsibility is to its Client and this document does not exonerate parties to a transaction from exercising all their rights and obligations under the transaction documents. This document cannot be reproduced except in full, without prior written approval of the Company. Any unauthorized alteration, forgery or falsification of the content or appearance of this document is unlawful and offenders may be prosecuted to the fullest extent of the law. Unless otherwise stated the results shown in this test report refer only to the sample(s) tested.

Attention: To check the authenticity of testing /inspection report & certificate, please contact us at telephone: (86-755) 8307 1443, or email: [CN.Doccheck@sgs.com](mailto:CN.Doccheck@sgs.com)

样品照片:



此照片仅限于随SGS正本报告使用

\*\*\* 报告完 \*\*\*